

Chela Ltd.

78 Bilton Way • Enfield • Middlesex EN3 7LW • UK
Tel +44 (0)20 8805 2150 • Fax +44 (0)20 8443 1868
E-mail mail@chela.co.uk • Website www.chela.co.uk

Packing and Shipping Information

Eurowash XL is non-hazardous for shipment by air, sea, rail and road. It is available in the following container sizes.

25 litre 200 litre 1000 litre

Type of container	Net weight (kg)	Gross weight (kg)	Size (mm) (h x d) or (h x w x d)
25 l plastic	26.75	27.85	420 x 290 x 260
200 l plastic	214	222	920 x 590
1000 l plastic	1070	1145	1140 x 1206 x 1000

Specification

Appearance:	Clear thick liquid
Colour:	Tan
Odour:	Cherry
S.G.:	1.07
pH (concentrate) :	0.44
(10% v/v) :	1.24
Foam:	Medium
Surfactants	Non-ionic, ethoxylated alcohol, and glycoside.
Antistatic, glossing aid	Cationic

Hazard Identification

Risk & Safety:	Irritating to eyes and skin
Hazard Symbols:	Xi

First-aid Measures

Inhalation:	Not applicable
Eyes:	Irrigate with water for at least 15 minutes.
Skin:	Rinse contaminated area with plenty of water.
Ingestion:	Rinse mouth with water. Give plenty of water to drink.

Consult the Safety Data Sheet for full Health and Safety information.



Chela Ltd is a
BS EN ISO9002:1994
registered organisation

CERT NO FS60515

Eurowash XL

Removes iron stain quickly and completely. Leaving surfaces clean and streak free. Eurowash XL will remove even thick old layers of iron stain from nooks and crannies. To use simply spray on, agitate, leave a short while and brush rinse off. Eurowash XL has been approved for use in the rail industry by 4-Rail Ltd.

Benefits of using Eurowash XL

- Free of oxalic acid - uses new technology
- Very quick and effective
- Thick and foams so it clings - easy to use.
- Stays wet for a long time
- Leaves surfaces clean, streak-free and shiny
- Approved by 4-Rail
- Effective in hard or soft water
- Does not form white deposit with hard water
- Easily applied by brush or spray
- Removes old thick build up of iron dust
- Lifts off ordinary soil and grime
- Removes oil and grease

Safety & Environment

- Irritant under EU legislation
- Uses biodegradable surfactants
- Phosphate free
- Does not contain, NTA, EDTA or HEDTA
- Oxalic acid free
- Does not use alkyl phenol ethoxylates

Chela: Innovative Cleaning Solutions and Technical Care

Chela Product Code: 1125

Dilutions

For heavy soil use neat as supplied.

May be diluted with as much as nine volumes (10% v/v) of water depending on degree of soiling.

May be used with hard or soft water.

Methods of use

Hand

Apply neat or diluted product with a pump-up spray. Agitate with a brush and allow to dwell for up to 60 minutes. Usually a few minutes is enough. Agitate again and brush rinse with low pressure water. Brush to aid rinsing if necessary. Always use clean equipment.

Automatic Brush Wash

Apply Eurowash XL by spray and drive through the brush wash in the normal way. Compatible with Eurowash 1000 used in automatic brush wash. Do not use with other products.

Pressure washer

Apply neat or diluted product with a pump-up spray. Agitate with a brush and allow to dwell for up to 60 minutes. Usually a few minutes is enough. Agitate again and rinse using a pressure washer. Brush to aid rinsing if necessary. Always use clean equipment.

Product Endorsements

Eurowash XL has been tested to their material compatibility protocol by 4-Rail Ltd and been shown to be suitable for use in the rail industry.

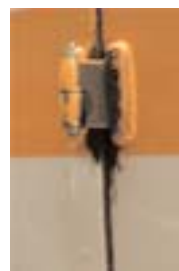
A copy of the full report is available on request.



Train after cleaning with Eurowash XL. Notice how clean and clear the paint is.



Close up of hinge after cleaning with Eurowash XL



Close up of hinge after cleaning with conventional oxalic acid based product showing incomplete removal of iron dust.